



FIRE SAFETY PRESENTATION AT CEU RESIDENCE & CONFERENCE CENTER

If you discover fire, or suspect an outbreak of fire



Raise the ALARM and initiate an evacuation



Evacuate to the assembly point



Call for the Fire Brigade
(**105** or **112**)

If you discover fire, or suspect an outbreak of fire



- Always position yourself with an exit or means of escape at your back before you attempt to use an extinguisher to put out a fire.
- In general, leave IMMEDIATELY on hearing the alarm or if instructed to leave the area by CEU security staff.
- ONLY IF it is SAFE to do so, attempt to extinguish the fire.

If you discover fire, or suspect an outbreak of fire

Use the fire alarm equipment,
and then inform surrounding people.

To use: break the front window,
then press the button. The alarm signal will sound immediately.



How to evacuate the building



- Leave the building immediately.
- Follow the green signs directing you to the nearest safe exit.
- Walk quickly but don't run. Close doors behind you.

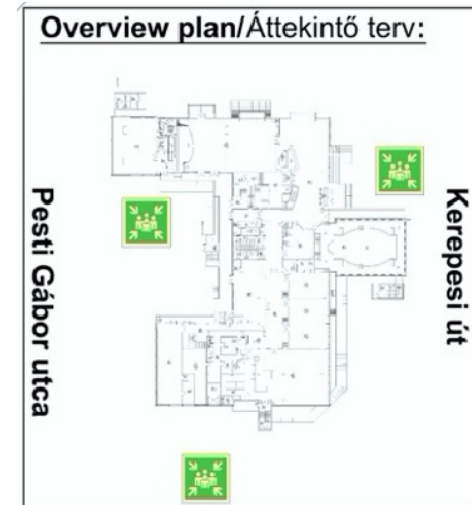
How to evacuate the building



- In case of fire do not use the elevators, use the stairs.
- The fire section doors will automatically close. You can open these manually.

How to evacuate the building

- Do not risk your life for your belongings, get out immediately.
- Go to the Fire Assembly Point.



- Do not return to the building until told to do so by the CEU security staff.



FIRE/EMERGENCY ESCAPE ROUTE

/ Menekülési terv /

CEU Residence & Conference Center
Ground Floor



Symbols / Jelkulcs:

- Escape route / Menekülési irányok
- ↔ Emergency exits / Vészkijárat
- 🔥 Fire extinguisher / Tűzoltókészülék
- 📞 Manual call points / Kézi jelzésadó
- 🚒 Hydrant wall box / Fali tűzcsap
- 👥 Assembly point / Gyülekezési pont
- 👤 You are here / Ön itt áll



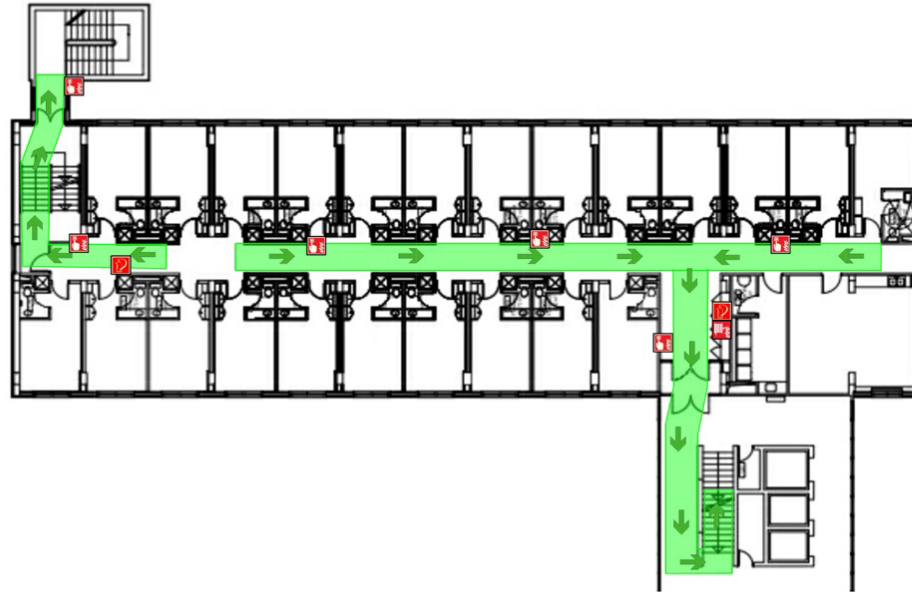
How to evacuate the building

Maps of escape routes are placed in offices, rooms and corridors.

FIRE/EMERGENCY ESCAPE ROUTE

/ Menekülési terv /

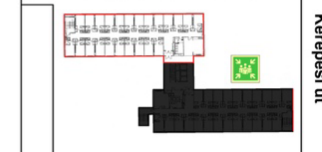
CEU Residence & Conference Center
1st floor



Symbols / Jelkulcs:

- Escape route / Menekülési irányok
- ↔ Emergency exits / Vészkijárat
- 🔥 Fire extinguisher / Tűzoltókészülék
- 📞 Manual call points / Kézi jelzésadó
- 🚒 Hydrant wall box / Fali tűzcsap
- 👥 Assembly point / Gyülekezési pont
- 👤 You are here / Ön itt áll

Overview plan/Áttekintő terv:





In case of hearing the fire alarm



- Leave the building when you hear the fire alarm sound!
- Follow the safety signs directing you to the nearest safe exit!
- Inform the Fire Brigade (Telephone numbers in Hungary: **105** or **112**)



Never fight a fire if...

...one extinguisher is not enough.

...smoke is affecting your breathing.

...you can not see the way out.

...your efforts are not reducing the size of the fire.

Never fight a fire if...

...you don't know what is burning.

...the fire is spreading rapidly .

...the fire is producing a large amount of smoke .

...IF YOUR INSTINCTS TELL YOU NOT TO



How to use the fire extinguisher

OPERATING YOUR FIRE EXTINGUISHER



PULL THE PIN



AIM AT THE BASE



SQUEEZE TRIGGER



SWEEP

Remember:

- Test extinguisher before approaching the fire
- Keep low & approach with the wind at your back
- Back away, watching for rekindle

- Take it off from the wall and carry near to the fire.
- Place the extinguisher at your side.
- Hold the hose in one hand, pointing it at the base of the fire.
- Pull out the safety pin with the other hand, then push down/squeeze the handle.
- Direct the contents of the extinguisher on the fire.

Smoking



- The most common cause of fire death in the buildings is smoking
- In the CEU Buildings smoking is forbidden. Only in the appointed places are you allowed to smoke. Smoking areas are 5 meters from the entrance.
- Use a proper ashtray that can't tip over and is made of a material that won't burn,
- Don't leave a lit cigarette, cigar, or pipe lying around.

Cooking



- Avoid leaving cooking unattended
- Don't cook if you are tired, have been drinking alcohol or taking medication that might make you drowsy.
- Make sure not to lean over hot hobs and keep tea towels and cloths away from the cooker hob
- Double check the cooker hob and odor eliminators are turned off when you've finished cooking

What to do if flammable liquid is on fire?



- Never throw water over a fire as it could create a fireball.
- Turn off the heat, if it is safe to do so.
- Cover the fire with a lid or something not combustible.

Candles and free fires

- It is forbidden to use candles and open fires in CEU Residence & Conference Center

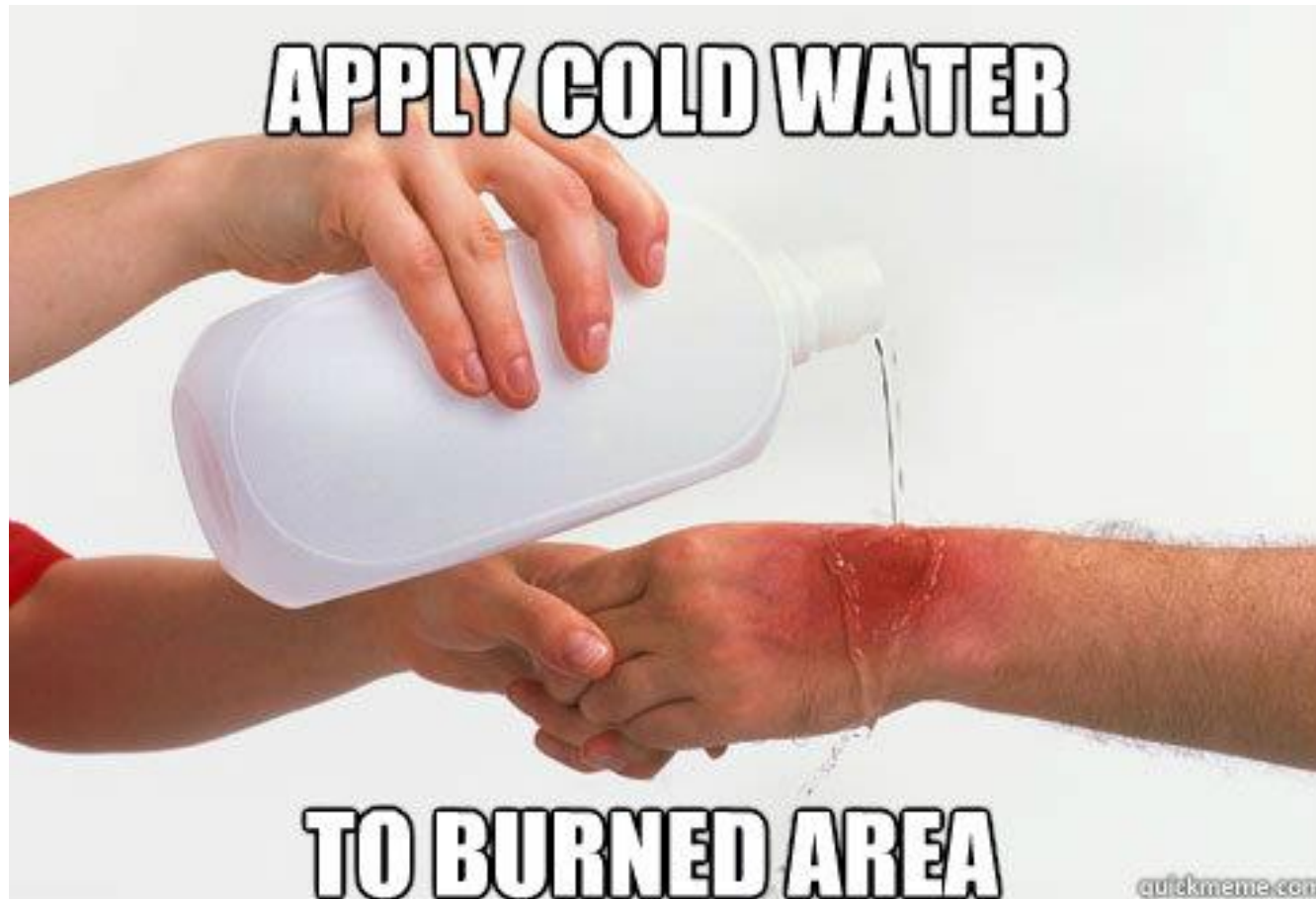


Electricity and electronic devices



- Don't use forged electrical chargers as they may be unsafe.
- Make sure electronic devices have a European safety mark when you buy them.
- Unplugging devices and chargers when you are not using them or when you go to bed.
- Keep to one plug per socket.

First Aid



What to do if your clothes catch fire



STOP!

Don't run around, you'll make the flames worse.

Lie down and roll around. It makes it harder for the fire to spread.



DROP!

Smother the flames with a heavy material, like a coat or blanket.

Remember, Stop, Drop and Roll!



ROLL!

Fire signs and emergency signs in general use



Thank You for your contribution!